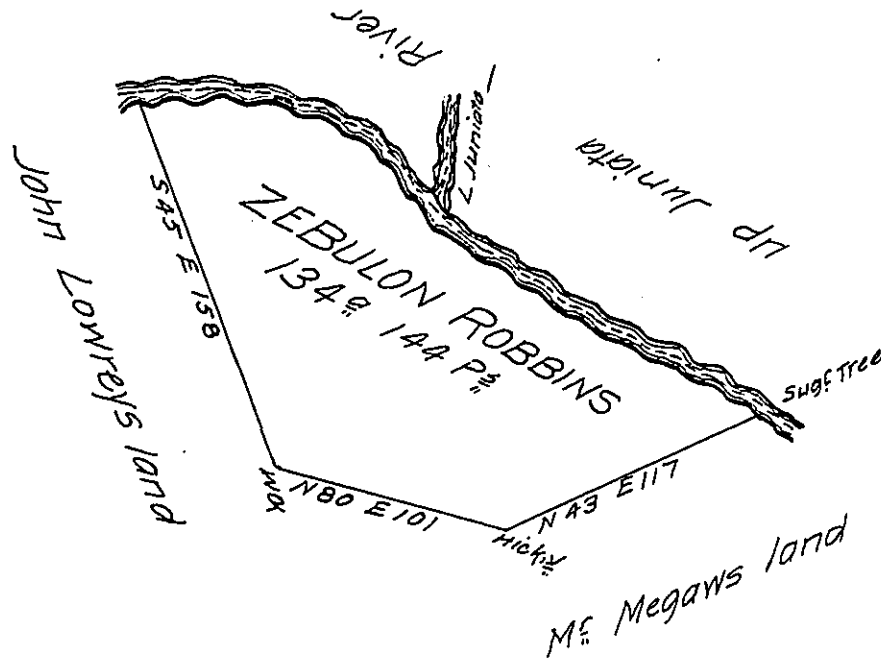


Courses and Distances  
up the Juniata

N	78	W	25
S	79	W	25
West			23
N	79	W	60
N	83	W	29
N	58	W	47
S	84	W	44
S	60	W	54



*Draught of a Tract of Land Situate on the South Side of Juniata & Surveyed by Richd Tee the 15<sup>th</sup> day of Aug: 1767 by Warrant Dated the 10<sup>th</sup> day of Sep: 1762 and Resurveyed the 31<sup>st</sup> of June 1785 Containing one hundred and Thirty <sup>4</sup>~~four~~ acres & 144 Pct the Usual allowance of Six P Cent for Roads &c.*

*George Woods*

*John Lukens Esq: SG.*

*D.S.*

*IN TESTIMONY that the above is a copy of the original remaining on file in the Department of Internal Affairs of Pennsylvania, made conformably to an Act of Assembly approved the 16th day of February, 1833, I have hereunto set my Hand and caused the Seal of said Department to be affixed at Harrisburg, this twentieth day of September 1906*

*Isaac R. Brown*  
Secretary of Internal Affairs.